

Y12 – Y13

BTEC Extended Certificate (x1) in Health and Social Care

Part 1 - Compulsory content that will be tested in an assessment when you return to college.

# Working in Health and Social Care



**Health and Social Care**

**Full Name** .....

## Contents

What will I be studying in Unit 2?	Page 3
Key Words	Page 4
Task 1 Dealing with Ill Health	Page 5
Task 2 Dealing with Learning difficulties	Page 6 – 7
Task 3 Multidisciplinary Working	Page 8 – 9
Task 4 Dealing with Age related needs	Page 10 - 11

## What will I be studying?

This unit will help you to understand what it is like to work in the health and social care sector. When working for an organisation in this sector, you will have important responsibilities that you need to understand and carry out. These include maintaining the safety of and safeguarding individuals with health and social care needs, making sure that you properly handle their personal information and preventing discrimination towards them. You will need to understand how you will be accountable both to these individuals and the regulatory bodies that represent people who work in the health and social care sector. It is necessary for you to understand how your work will be monitored when you carry out a specific role such as nurse or social worker.

You will begin by looking at the range of roles and general responsibilities of people who work in health and social care settings. You will learn about the organisations that provide services in this sector, and the different settings in which these services are delivered according to the needs of the service user. You will learn about the ways these services are provided and about the barriers that can prevent people from getting the services they need. You will learn about working with people with specific needs, including ill health, learning disabilities, physical and sensory disabilities, and the needs of people who occupy different age categories. This unit will cover the skills you need to work in these areas of health and social care

## How will I be assessed?

You will be assessed through an External assessment, this will be carried out in July

## Key Words

Please research the following key words and demonstrate your own understanding by completing the table below.



Key Word	Internet Definition	Your Definition
Role		
Responsibility		
Care Values		
Equality		
Diversity		
Anti-discriminatory		
Multi-disciplinary		
Organisations		
Professionalism		
Regulate		
Voluntary Sector		
Private Sector		
Trusts		

### Research Task 1 - Dealing with Ill Health

David is 24 years old and suffers with a mental illness. He was recently admitted to a psychiatric unit after a sudden decline in his condition. He is responding well to treatment. David and his family are Jewish, and his parents visit every day. They are concerned that the care he is receiving does not always take account of his religious beliefs.

a) - Identify two ways his parents can raise concerns about David's care.

1

.....  
.....

2

.....  
.....

b) - Describe the role of **one health professional** and **one social care professional** who may be involved in caring for David when he returns home.

<u>Health care professional</u>	<u>social care professional</u>

## Research Task 2 - Dealing with learning difficulties

Sarah is 19 years of age and has moderate learning disabilities. She currently lives at home with her father, John, who works part time. Sarah attends a local college two days a week and attends a day care centre three days a week. Sarah has been displaying challenging behaviour, which her father is struggling to cope with. Sarah needs support with most day-to-day tasks but wants to do things herself.

a) Identify two social care workers who may work with Sarah.

1.....

2.....

b) Describe two ways that health and social care staff can support Sarah's father.

1

.....  
.....  
.....  
.....  
.....  
.....  
.....  
.....

2

.....  
.....  
.....  
.....  
.....  
.....  
.....  
.....

c) Describe the procedures that staff at the day care centre and staff at college must follow to keep Sarah safe.

### Day Centre

.....

.....

.....

.....

.....

.....

.....

.....

.....

.....

.....

.....

.....

.....

.....

.....

.....

.....

.....

.....

.....

.....

### College

.....

.....

.....

.....

.....

.....

.....

.....

.....

.....

.....

.....

.....

.....

.....

.....

.....

.....

.....

.....

.....

.....

### Research task 3 - Multidisciplinary Working

Throughout the unit you will be research how specific services carry out their role and responsibilities. The research you carry out is imperative in answering exam questions. Therefore you are tasked to research 3 different types of services (Statutory, Private or Voluntary) complete the table below and then describe their roles and responsibilities.

Organisation	Statutory/Private or Voluntary	Description of main roles and responsibilities
	Statutory	
	Private	
	Voluntary	





---

---

**Research Task 4 - Dealing with Age-related Needs**

**George is 74 years old and has been diagnosed as having Parkinson's disease. He lives in sheltered housing where you visit daily as his care assistant. You have noticed that the Parkinson's disease symptoms are getting worse. These symptoms include confusion and tremors. George recently scalded himself because he was shaking when making a hot drink. He is also finding it difficult to walk**

a) You have already defined empowerment you now need to explain how George can be empowered to promote his rights, choices and wellbeing.

.....

.....

.....

.....

.....

.....

.....

.....

.....

.....

.....

.....

.....

.....

.....

.....

.....

.....

.....

.....

.....

.....

.....  
.....  
.....

b) It has been discussed that *George* might be better off in a Nursing home. You now need to give reasons for and against this happening

For *George* going into a Nursing home

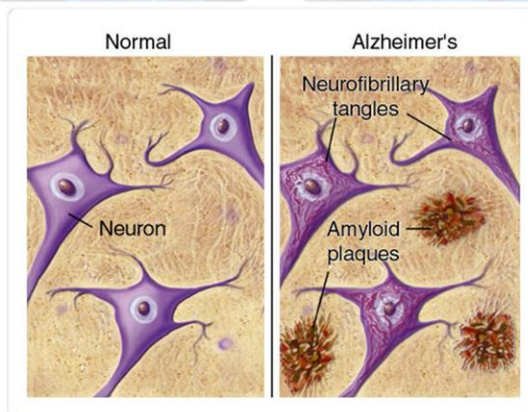
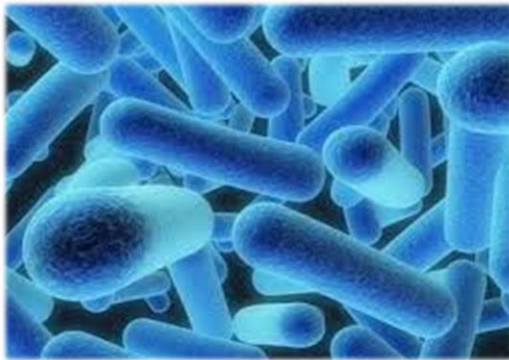
.....  
.....  
.....  
.....  
.....  
.....  
.....  
.....  
.....  
.....  
.....

Against *George* going into a Nursing home

.....  
.....  
.....  
.....  
.....  
.....  
.....  
.....  
.....  
.....

**Part 2 – Strongly recommended additional content which will not be tested in an assessment but will support you in gaining more subject knowledge.**

# Physiological Disorders and their Care



**Health and Social Care**

**Full Name** .....

## Contents

What will I be studying in Unit 14?	Page 3
Key Words	Page 4
Task 1 Researching Physiological Disorders	Page 5 – 6
Task 2 Research investigative/diagnostic procedure and treatments	Page 7 – 8

## What will I be studying?

If you have ever been ill then you will know how important it is to receive the right treatment and care in order to make a full recovery. It is essential for workers in the health and social care sector to understand the nature of physiological disorders and how to provide appropriate treatment and care. This includes being aware of the causes and effects of physiological disorders, as well as the roles of different professionals involved in providing treatment and care for service users.

In this unit, you will learn about the signs and symptoms of physiological disorders and how they are investigated and diagnosed. You will also learn about the different types of treatment and support available for individual service users, including surgery, rehabilitation and complementary therapies. You will create a treatment plan for a service user with a specific physiological disorder. This will help you understand the treatment and support strategies involved, the contributions of different professionals and the importance of providing individualised care. This unit will form a good basis for higher education study in health and social work courses and nursing qualifications. The information and activities will also help to prepare you for a variety of careers within the health and social care sector.

## How will I be assessed?

You will be assessed by two summative assignments for this unit. The relationship of the learning aims and criteria is:

Assignment 1 - Learning aims: A, B and C (A.P1, B.P2, C.P3, C.P4, A.M1, B.M2, C.M3, A.D1, BC.D2)

Assignment 2 - Learning aim: D (D.P5, D.P6, D.P7, D.M4, D.D3)

## Key Words

Please research the following key words and demonstrate your own understanding by completing the table below.



Key Word	Internet Definition	Your Definition
Physiological		
Disorders		
Disease		
Treatment		
Diversity		
Inherited		
Diagnosis		
Investigation		
Professionalism		
Regulate		
Voluntary Sector		
Private Sector		

Trusts		
--------	--	--



**Research Task 1 - Researching Physiological Disorders.**

A major part of the unit is researching disorders and as such you are asked to research the following disorders by completing the table provided.

Disorder	Description	Signs and Symptoms	Reference (website/ book/ journal/ magazine/ TV programme etc.)
Diabetes			
Parkinson's			
Asthma			

Osteoporosis			
Coronary Heart Disease			
Prostate Cancer			

**Research Task 2 - Research investigative/diagnostic procedure and treatments for Physiological Disorders.**

Another major part of the unit is researching how the disorders studied are diagnosed and treated and to help underpin your knowledge you are asked to research the investigative/diagnostic procedure and treatments for the below Disorders

Disorder	Investigative/Diagnostic procedure	Treatments	Reference (website/ book/ journal/ magazine/ TV programme etc.)
Diabetes			
Parkinson's			
Asthma			

Osteoporosis			
Coronary Heart Disease			
Prostate Cancer			

### **Part 3 – Metacognition and the Study Cycle**