

WELCOME

Evening



 newcollege
Pontefract

MEET THE TEAM

SENIOR LEADERSHIP TEAM



VICKY MARKS
PRINCIPAL



**CHELSEA
BRANSON**
VICE PRINCIPAL



NEIL MUMBY
VICE PRINCIPAL



JAMES MORRIS
ASSISTANT
PRINCIPAL



LISA MARWOOD
ASSISTANT
PRINCIPAL



**GABRIELLE
JONES**
ASSISTANT
PRINCIPAL



JO HOLDEN
ASSISTANT
PRINCIPAL &
TRUST DIRECTOR
OF SAFEGUARDING

RECORD RESULTS



A-Level

99.6% Pass Rate

30.2% A/A* Grades

58.8% A* - B Grades
(7% above National Av.)

84.2% A* - C Grades
(9% above National Av.)



Applied General

100% Pass Rate

68.0% Distinction or
Distinction* Grades

(15% above National Av.)





OVER 2/3

of students progressed
to **University** or
Degree
Apprenticeships

20%

Progressed to **Russell**
Group Universities

RUSSELL
GROUP



12

Progressed to
Oxbridge Universities





W E A R E

OUTSTANDING





WHAT TO EXPECT FROM US

- Consistency
- Outstanding teaching
- Expert subject knowledge
- Personal development
- Comprehensive support and interventions
- Communication





WHAT WE EXPECT FROM OUR STUDENTS

- Serious commitment and hard work
- Excellent attendance and punctuality
- Positive attitude
- Organisation
- A willingness to learn and review

HOW WE PROVIDE HIGH LEVELS OF PASTORAL SUPPORT

- PROGRESS TUTORS
One to one support
- COUNSELLING SERVICE & THE WELLBEING HUB
- EXTERNAL AGENCIES
- SAFEGUARDING TEAM
- TUTORIAL PROGRAMME
Stress management and positive mental health
- STUDY SUPPORT
- TEACHING STAFF
- CAREERS ADVICE
- OXBRIDGE PROGRAMME
- ACHIEVING ASPIRATIONS PROGRAMME



ACCESS ARRANGEMENTS AND IMPLICATIONS FOR TEACHING

- Letter sent regarding access arrangements at college and how they may differ from school. Follow-up took place at enrolment.
- Student implications for teaching have all been updated on Cedar. As per welcome letter, please check they are appropriate.
- See Sarah O'Neill or contact via email if there are any issues.



ACADEMIC SUPPORT



- Retrieval Practice
- Regular assessment and feedback
- Evidence-based teaching techniques



- Teacher Access Periods (TAPs)
- Intervention and Support Centre (ISC)
- Extra lessons

**THESE ARE TIMETABLED IF NEEDED,
AND ARE THEREFORE COMPULSORY**





THE REMAINDER OF YEAR 12



**ASSESSMENTS,
ASSIGNMENTS,
DEADLINES**



STAFF CONSULTATIONS



**YEAR 12 PROGRESSION
EXAMS
EXTERNAL EXAMINATIONS**



PROGRESSION TO YEAR 13

4 JULY 2025



THE PROBATIONARY PERIOD

- **Objective:** to ensure our students are on the most appropriate courses to be successful in 2 years
- Students will be RAG rated towards the end of the probationary period (16 October). Course changes are never guaranteed, and will not be allowed after this



EXCELLENT START



SUPPORT & INTERVENTION PROVIDED



REVIEW

2 YEAR JOURNEY



- It is unlikely that all students will replicate GCSE performance early in Y12. Students are working towards their Minimum Target Grades (MTGs)
- The end of Y13 target grades on Cedar are not a prediction but an aspirational MTG based on GCSE performance
- Students need to work with staff to build their resilience
- MTGs are not a cap

DIFFERENCE FROM SCHOOL

- Significant increase in demand from Level 2 to Level 3
- Adult environment, no bells, first names, no uniform
- Fewer rules, but most importantly:

- ATTENDANCE
- PUNCTUALITY
- LANGUAGE
- BULLYING
- MISUSE OF SOCIAL MEDIA
- ID VISIBLE
- **RESPECT!**



TIMETABLE

- **Timetable - Different start and finish times each day; 5, 4, or 3 days**
- Lessons are 90 minutes long
- 4.5 hours/subject/week. Organising independent time is crucial
- ISC, TAP, extra lessons and tutorials all compulsory

	Monday	Tuesday	Wednesday	Thursday	Friday
8.30am – 8.50am			HoS Briefing		Full Staff Briefing
1 8.50am – 10.20am (90 mins)	A1	F1	D1	B3	C2
10.20 – 10.35am (15 minutes)	Break				
2 10.35am – 12.05pm (90 mins)	B1	E1	C1	F2	D2
3 12.05pm – 1.00pm (55 minutes)	Lunch	Lunch	Lunch	Lunch	Lunch
4 1.00pm – 2.30pm (90 mins)	A2	TAP 12.35 – 1.20pm A3 1.20pm – 2.50pm	TAP2 13.00-13.45 TAP3 13.45-14.30	E3	C3
5 2.30pm – 4.00pm (90 mins)	B2	2.50 – 4.00pm CPD/Meeting/Planning Trust (70 minutes)	E2	F3	D3

COMMUNICATION



TEXT MESSAGE



PHONE CALLS



EMAIL



**PARENT/CARER
MEETINGS**



LETTERS BY POST



SOCIAL MEDIA



WEBSITE

<https://ncpontefract.ac.uk/letters/>





CEDAR

Username:

Password:

LOGIN



My Home

Welcome Parent / Guardian

Important Information

A warm welcome back to year 13 and we hope that year 12 students are settling in well. A few reminders from the senior leadership team:

- Please ensure your ID lanyard is visible at all times
- Be respectful of the college site and the neighbouring areas, ensuring you don't drop litter or chewing gum and that you are friendly and polite.
- Keep your eye on the future and make sure you engage in as many activities as possible: Clubs, Work experience, trips, visiting speakers to name but a few.
- Don't rule out University. There's something for everyone and there are ways of making it affordable. Book a careers appointment if you have questions
<https://outlook.office365.com/owa/calendar/CareersAppointment@n>

Attendance

100% This is your overall attendance percentage.

[View Attendance Summary](#)

Targets

A* A* A*

GCSE Points: 8.20
[View markbook summary](#)

Subject Target Grades

Subject	Target Grade
GCE A Level 2 Yr History (AQA)	A*
GCE A Level 2 Yr Law (OCR)	A*
GCE A Level 2 Yr Sociology (AQA)	A*

[View Markbook Summary](#)

Today's Activities

Time	Activity	Location
13:00	GCE A Level Y13 Law Block E2	LAW11

[View Full Timetable](#)

Pastoral Log

Tutor: Townsend, Conor

Supervisor Tutor: [Email your tutors](#)

Active Flags

Flag	Start	End	Note
Trips & Visits Consent	12/09/22	12/07/24	

ATTENDANCE AND PUNCTUALITY



Week	%	Mo 0850	Mo 1300	We 0850	We 1035	Th 0850	Th 1300	Th 1430	Fr 1035	Fr 1300	Fr 1430
04 Sep 23	100%					P	P	P	P	\$	P
11 Sep 23	75%			/	/	/	E	E	/	/	/
18 Sep 23	50%			L	N	O	O				

[Download spreadsheet](#)

/
Present

P
Permission

E
Explained
Absence

O
Unexplained
Absence

L
Late

N
No ID

\$
Lesson not
held

PASTORAL LOG

Enrichment - Careers and Progression Related Activity

• Tutorial Year 12



Huffinley, Sam

Attended a talk on Careers and HE Day for Personal Statements to support them in their next steps.

Mon 3rd Jul 2023 3:44pm

Edit

Occurred
17
Apr 07:12

Posted
17
Apr 2023

Progress & Achievement

• GCE A Level Y12 Mathematics Block B



Pilling, Debs

On/above target in Cedar 4. Well done, keep up the good work and ensure thorough preparation for the Progression Exam.

Occurred
22
Sep 09:01

Posted
22
Sep 2023

Initial Concern

• Y12 National Extended Certificate in Psychology Block C



Hover or tap for a list of notified staff members.



PASTORAL LOG

GCE A Level Y13 Art Block D

ASSIGNMENT	DATE	MARK	MAXIMUM	%	GRADE	MTG	INFO
Cedar 2 21P-ALART	15-Dec-2021			75%	B	A*	i
Cedar 3 for 21P-ALART	07-Feb-2022			75%	B	A*	i
Cedar 4 for 21P-ALART	01-Apr-2022			75%	B	A*	i
Cedar 5 for 21P-ALART	16-May-2022			75%	B	A*	i
Progression Exam for 21P-ALART	06-Jul-2022			75%	B	A*	i

EXCEL

GCE A Level Y13 Biology Block A2

ASSIGNMENT	DATE	MARK	MAXIMUM	%	GRADE	MTG	INFO
Cedar 2 21P-ALBIO	15-Dec-2021			75%	B	A*	i
Cedar 3 for 21P-ALBIO	07-Feb-2022			75%	B	A*	i
Cedar 4 for 21P-ALBIO	01-Apr-2022			75%	B	A*	i
Cedar 5 for 21P-ALBIO	16-May-2022			75%	B	A*	i
Progression Exam for 21P-ALBIO	06-Jul-2022			85%	A	A*	i

EXCEL

GCE A Level Y13 English Literature Block B

ASSIGNMENT	DATE	MARK	MAXIMUM	%	GRADE	MTG	INFO
Cedar 2 21P-ALLIT	15-Dec-2021			85%	A	A*	i
Cedar 3 for 21P-ALLIT	07-Feb-2022			100%	A*	A*	i
Cedar 4 for 21P-ALLIT	01-Apr-2022			100%	A*	A*	i
Cedar 5 for 21P-ALLIT	16-May-2022			100%	A*	A*	i
Progression Exam for 21P-ALLIT	06-Jul-2022			100%	A*	A*	i



WHO CAN SEE THE DETAILS ABOUT STUDENTS?



ALL TEACHERS
PROGRESS TUTORS
STUDENT
PARENT/CARER
SLT

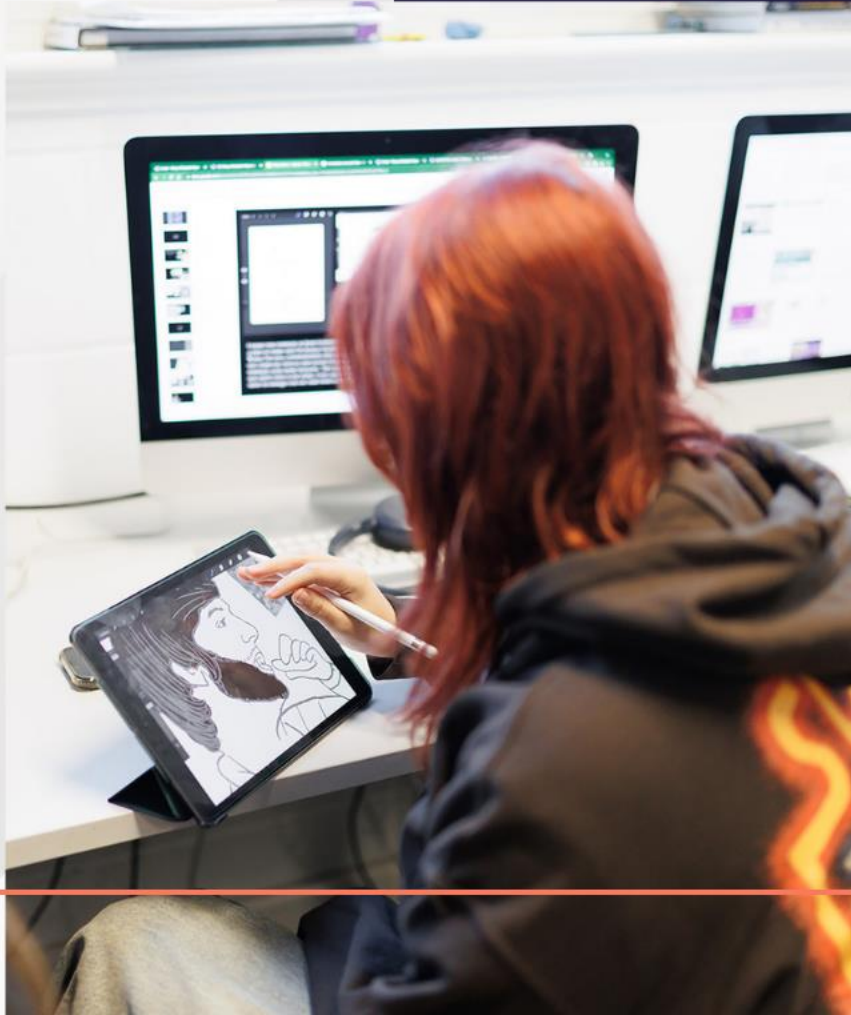
WHO CAN CREATE OR ADD TO PASTORAL LOGS?



TEACHERS
PROGRESS TUTORS
SLT

Contact the relevant progress tutor if you have any concerns





WHERE TO FIND CEDAR AND HOW TO LOG IN



- There is a link on the college website under the parents tab. It works well on a smartphone
- Set up your account – see letter for details
- Contact **Student Services** if you have any access problems



WHERE STUDENTS FIND THEIR WORK AND RESOURCES



Microsoft Teams





TEACHING & LEARNING





HOW WE LEARN

VS

HOW WE THINK WE LEARN

OUR APPROACH TO TEACHING AND LEARNING



HUMAN BRAIN



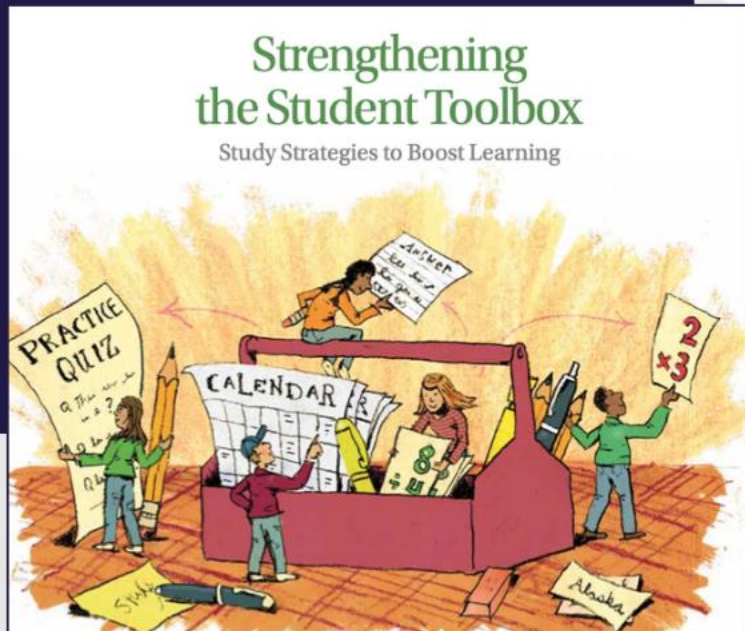
- Relate to what we know
- Only some information is retrievable
- Retrieval modifies memories
- Unlimited capacity



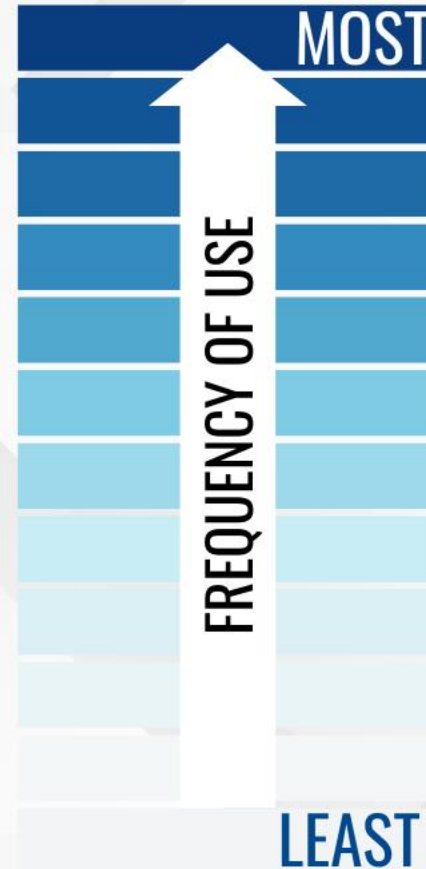
HUMAN-MADE RECORDER

- Exact recording
- Instantly retrievable
- Retrieval has no effect
- Limited capacity

STUDENT REVISION STRATEGIES



Dunlosky et al 2013



- Massed practice
- Blocked practice
- Re-reading
- Highlighting
- Summarisation
- Mnemonics
- Using images
- Self-explanation
- Elaboration
- Interleaved practice
- Distributed practice
- Retrieval practice**



RETRIEVAL PRACTICE

AKA THE TESTING EFFECT

Reading,
Reading,
Reading,
Reading

Reading,
Reading,
Reading,
Testing

Reading,
Testing,
Testing,
Testing



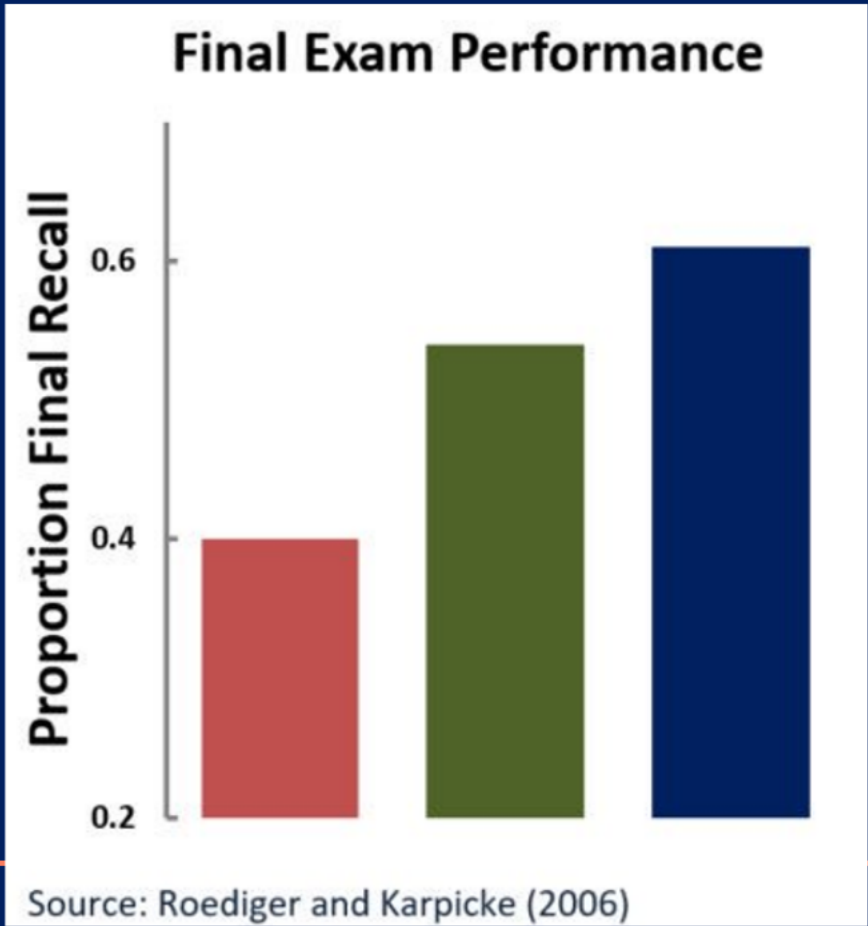
RETRIEVAL PRACTICE

AKA THE TESTING EFFECT

Reading,
Reading,
Reading,
Reading

Reading,
Reading,
Reading,
Testing

Reading,
Testing,
Testing,
Testing



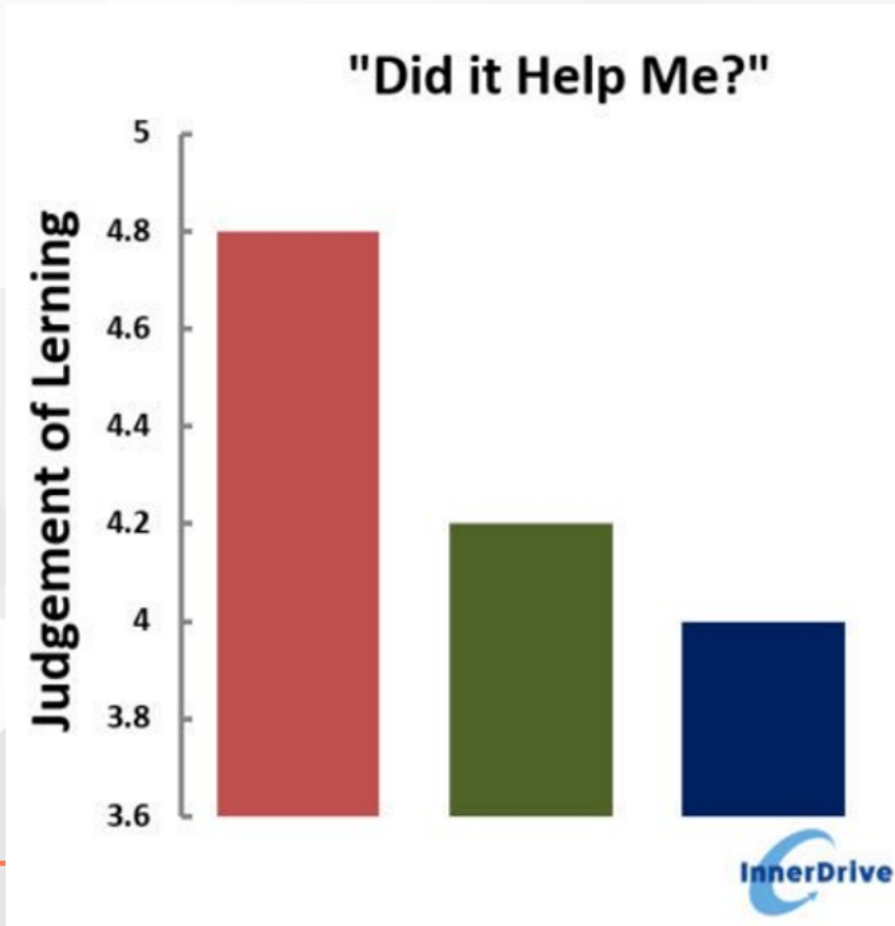
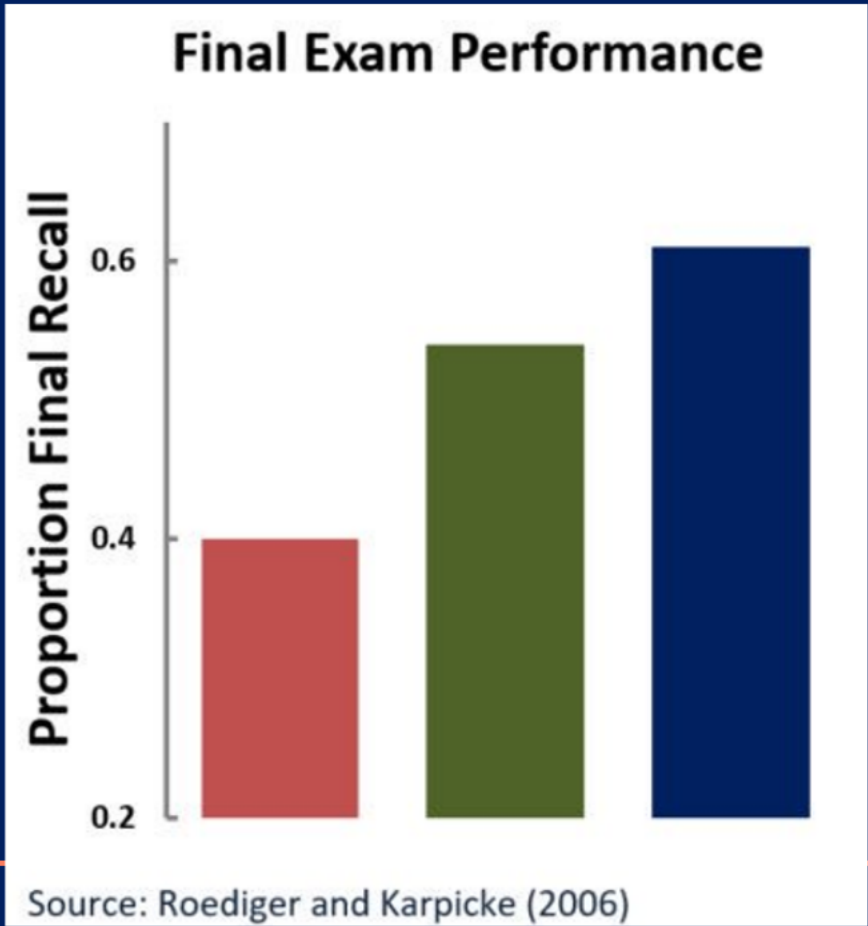
RETRIEVAL PRACTICE

AKA THE TESTING EFFECT

Reading,
Reading,
Reading,
Reading

Reading,
Reading,
Reading,
Testing

Reading,
Testing,
Testing,
Testing







Year 12 Examined Courses

Number of hours/subject/week

Year 13 Examined Courses

Number of hours/subject/week

	Year 12 Examined Courses	Year 13 Examined Courses
1st Half Term	2 Hours	5 Hours
		October Half term break
2nd Half Term	3 Hours	6 Hours
		Christmas Holiday
3rd Half Term	4 Hours	7 Hours
		February Half term break
4th Half Term	5 Hours	8 Hours
		Easter holiday
5th Half Term	5 Hours	10 Hours
		May half term break
6th Half Term	5 Hours	Exams

5 Reasons You Should Learn CPR



**CURRENT WORK OR
CONSOLIDATION**



PREVIEW TASK



**RETRIEVAL PRACTICE
OR REVIEW TASK**

THE STUDY CYCLE

PREVIEW ⌚ 5-15 minutes

- Before each lesson preview new material
- Skim the chapter or watch the video
- Note headings, summaries & big ideas
- Think of questions you want answered
- Decide what you want to learn or accomplish in your study session
- This will give you an overview and make learning the details in the lesson easier

ASSESS ⌚ 25 minutes

- Periodically assess your level of learning
- Test yourself from memory
- Explain the material in your own words
- Teach the material to someone else
- Apply your knowledge to a new context
- This will help you check whether your study methods are effective

STUDY ⌚ 25 minutes

- Daily study - schedule 3 to 5 focused study sessions every day at college
- Weekly review - set aside an hour a week to review your progress in all your subjects
- Read material. Make notes. Ask 'why', 'how' and 'what-if' questions
- Make connections. This will help you learn the material more deeply and reliably recall it in the future

ATTEND ⌚ 90 minutes

- Go to every lesson
- Participate fully
- Ask questions
- Take meaningful notes
- Participating in a lesson is much more effective than just reading, listening or watching a recording of a lesson

REVIEW ⌚ 5-15 minutes

- After each lesson, ideally within 24 hours
- Review your notes
- Fill in any gaps
- Develop any questions that need answering
- This will start the process of moving new material from working memory into long-term memory

WEEKLY REVIEW

1. Set aside an hour a week. No distractions!
2. Split up the hour evenly. 20 mins per subject
3. For 20 mins, review the week's work in that subject by:
 - Checking your notes are clear, legible and in order.
 - Summarise your learning in a quick diagram, mind-map or a few lines of notes.
 - Highlight or circle material you found hard this during the week. This is the material you will need to work on during your study periods.
 - Go through the DIL you have been given and any deadlines you have been set. Make a prioritised list for the week.
4. Once you've done this for one subject, repeat for the others

FOCUSED STUDY PLAN

PLAN ⌚ 1-2 minutes
Decide what you want to learn or accomplish in your study session

FOCUS 🧠 100%
Don't get distracted! Turn off your phone and find somewhere quiet to study

STUDY ⌚ 25 minutes
Interact with the material: organise, concept map, reflect, summarise, connect & elaborate

BREAK ⌚ 5-10 minutes
Clear your working memory by taking a short break

LEARN ⌚ 25 minutes
Learn the material - look, cover, write, check

BREAK ⌚ 5-10 minutes
Clear your working memory by taking a short break

TEST ⌚ 5 minutes
Test yourself from memory to see what you can remember



THE STUDY CYCLE is a 5-step approach to learning designed to help you become a more efficient learner. It works the way your brain learns best. The study cycle can be easily adapted to any course at college.

Study Advice

Here we have compiled lots of study advice. Download the resources and watch the videos below

Metacognition Workshop Presentations

- [What is Metacognition](#)
- [How Your Memory Works](#)
- [Retrieval Practice](#)
- [Spaced Practice](#)
- [Interleaving](#)
- [Collaboration](#)

FULL ENRICHMENT LIST

HEALTH & WELLBEING

Indoor Cricket
Emergency First Aid
Draw, Paint & Relax
Mindful Colouring
Stress Less
5-aside Football
Badminton
Golf
Ariel Hoop

CLUBS & SOCIETIES

Darts
Grade 5 Music Theory and Beyond
Vocal Group
NCP Function Band
College Production
Wind Ensemble
French Cinema Club
E-Sports
Legal Debate Club
BAFTA Young Games
Designer Competition
LGBTQ+ Club
Chess Club
Media Magazine
Nature Club
Psychology Film Club
Needle Craft Club
Oxbridge Programme
Dungeons & Dragons
IDEA Award
Sustainable Textiles
Sociology Club
Kickboxing
Horror Film Club
Lego Club
Community Visual Arts Club
Other Student Led Possibilities

SUPER CURRICULUM

Genetic Engineering
CREST Award
Spanish Film Club
Philosophy Club
Arts Award
Cambridge Chemistry Challenge
Chemistry Olympiad
Advanced English
Psychology Club
Politics Society
Filmmaking

LEADERSHIP & LIFE EXPERIENCES

Y13 Oxbridge Interview
Prep for Medicine, Vet Med and Biology Related Courses
TASS (Talented Athlete Scholarship Scheme)
Teaching Training
Enrichment
NHS Values
The Green Enterprise Challenge
Primary School Maths Mentors



#THATSENRIICHMENT

HOW TO APPLY FOR UNIVERSITY & APPRENTICESHIPS



ORGANISATION

PROBLEM SOLVING



TEAMWORKING

INIITIATIVE



COMMUNICATION

The 5 key transferable employability skills



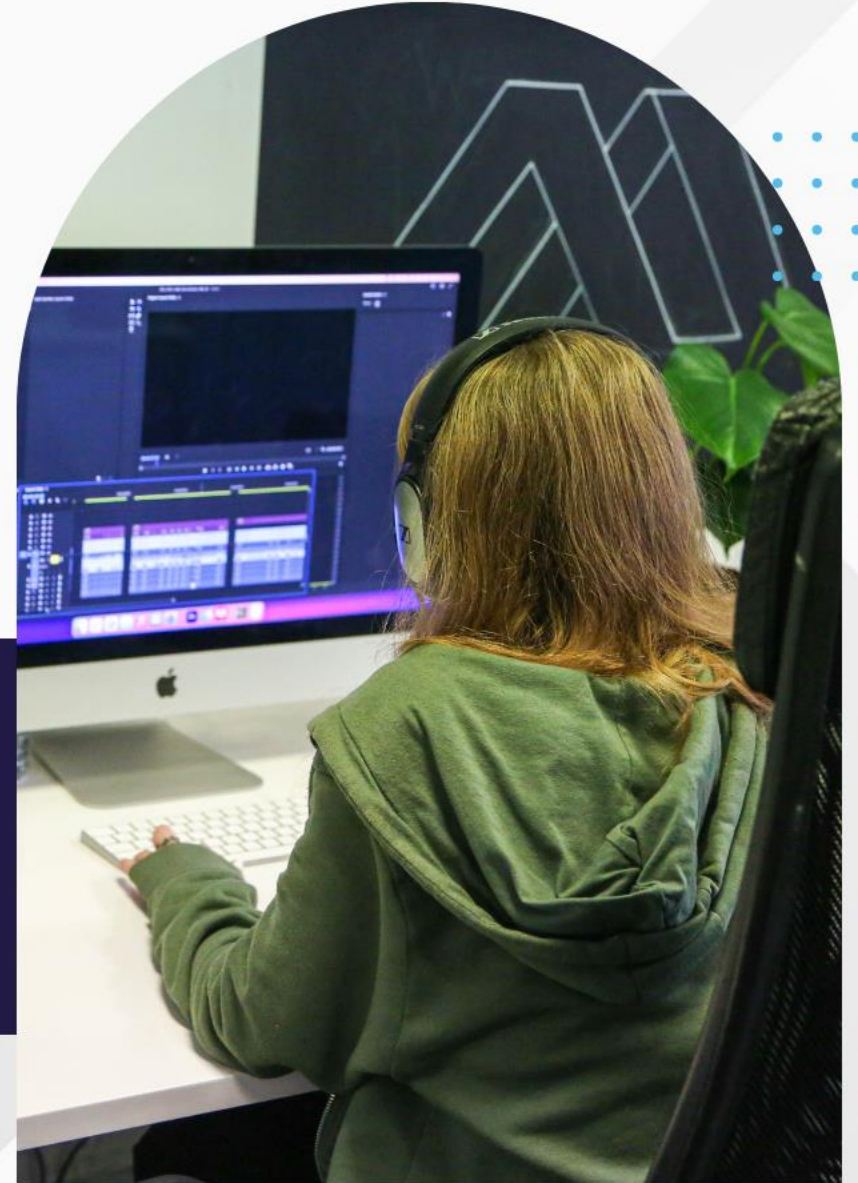
WORK experience

new college pontefract

Please could you consider if
your place of work could
accommodate a student on
work experience?



scan here



A GREAT 2 YEARS AHEAD

- Study/life balance
- Meeting new people and making new friends
- Lots of challenge and high expectations
- Developing as a person
- Becoming more resilient and independent
- Achieve the best results possible
- Be ready for the next chapter



COLLEGE HOUSEKEEPING

- Please do not use Park Lane, the Park or the residential streets for student drop off and pick up. Pontefract Collieries Car Park can be used for this purpose.
- Holidays during term time cannot be authorised. (half term 24 October to 3 November)
- Student parking – permits can be obtained in Student services. Sensible, responsible parking is essential
- <https://ncpontefract.ac.uk/letters/>



FINAL PART OF THE EVENING



- Progress Tutors are available now, or after tonight via email to answer your questions or for you to pass on information about students
- If you have been contacted to have a chat with a member of the senior team, please stay
- Our SENDCo Sarah O'Neill is also available tonight or please send her an email: sarah.oneill@nclt.ac.uk



THANK YOU

